



# How can LEADER facilitate rural energy communities? Examples from Germany

Quelle: Stephan Kelle/ photocase.de

## Study Visit for Policy Makers and Community Energy Experts in Schleswig-Holstein

Kiel, 9. October 2024



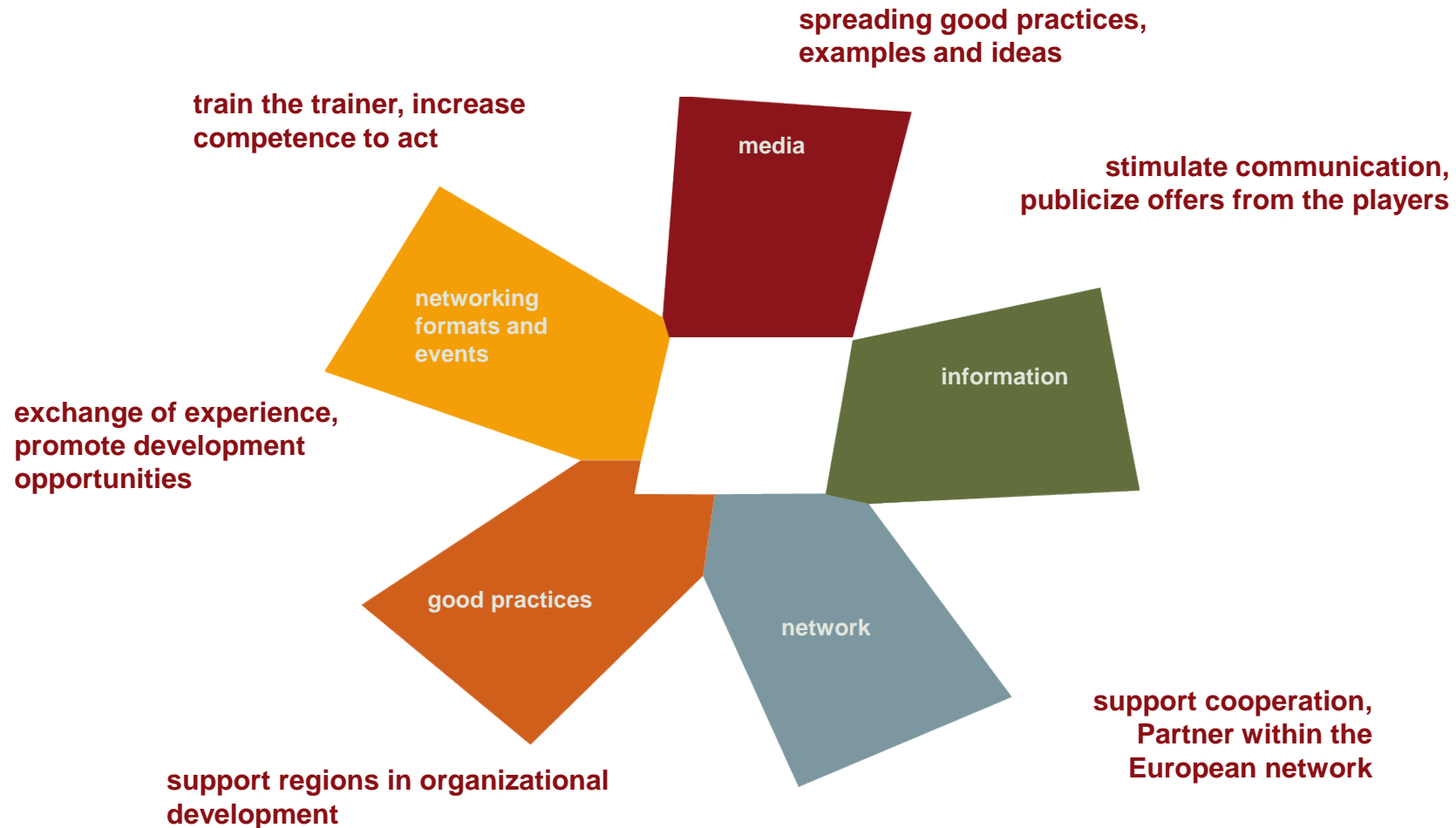
Finanziert von der  
Europäischen Union



Deutsche Vernetzungsstelle  
Ländliche Räume  
für die Gemeinsame Agrarpolitik der EU

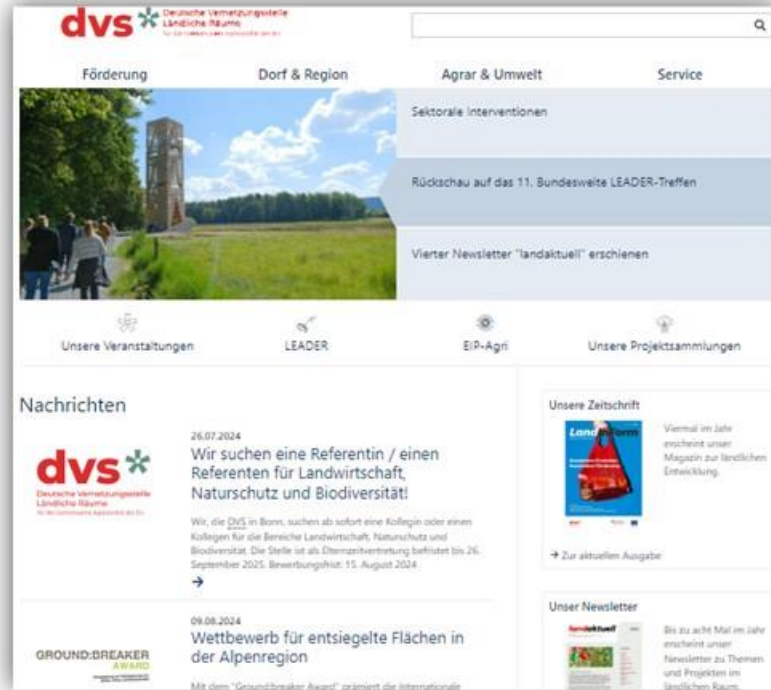
# Main fields of activities: German rural Network

## Deutsche Vernetzungsstelle ländliche Räume für die gemeinsame Agrarpolitik (GAP) der EU



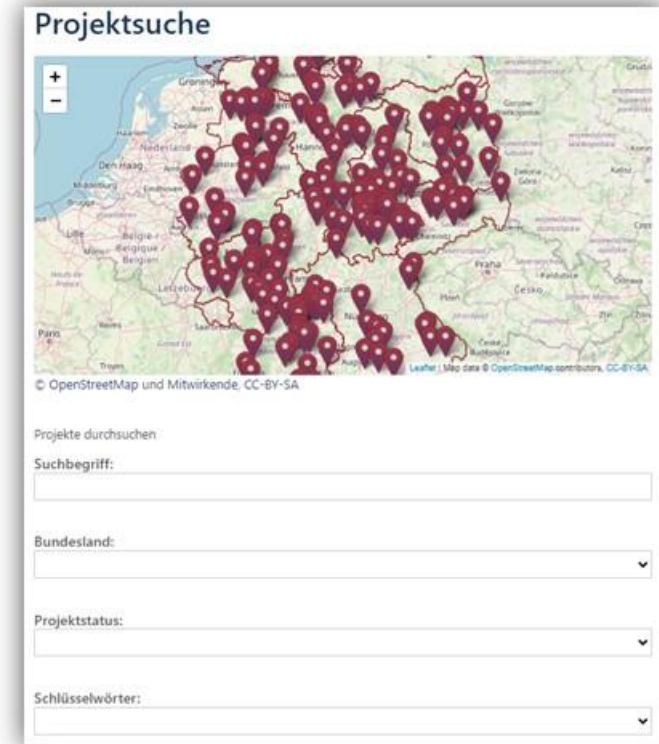
# Our website und database

## DVS-Website



**Everything at a glance** - events, dates & news, job exchange, funding, competitions, publications

## Database




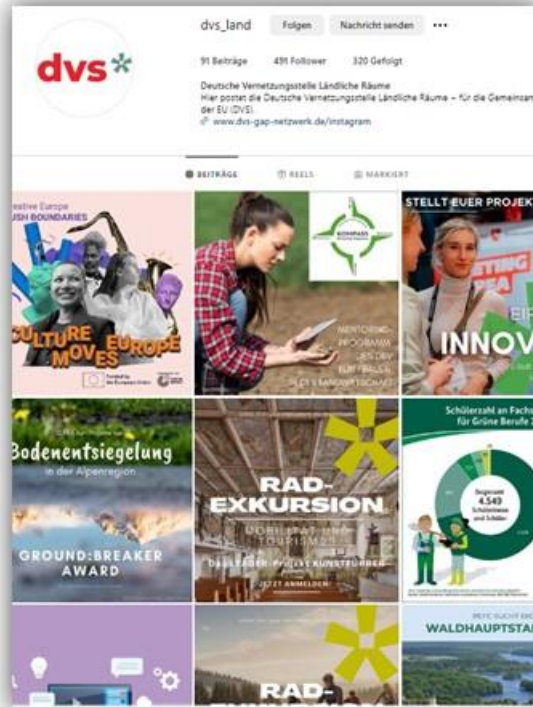
Rural development projects & EIP projects

[www.dvs-gap-netzwerk.de](http://www.dvs-gap-netzwerk.de)

# Our media



 @dvs.laendlicher.raum



 @dvs\_land



Our magazine **LandInForm**



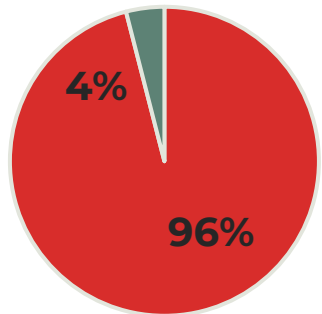
Newsletter **landaktuell**



[www.dvs-gap-netzwerk.de/publikationen](http://www.dvs-gap-netzwerk.de/publikationen)

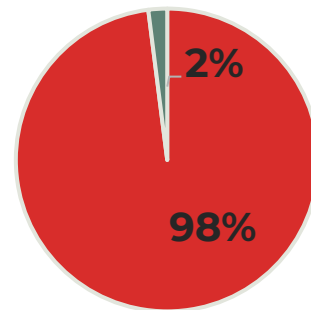
# Background: Spatial distribution of the installed net rated power

Wind energy (onshore)  
(May 2023)

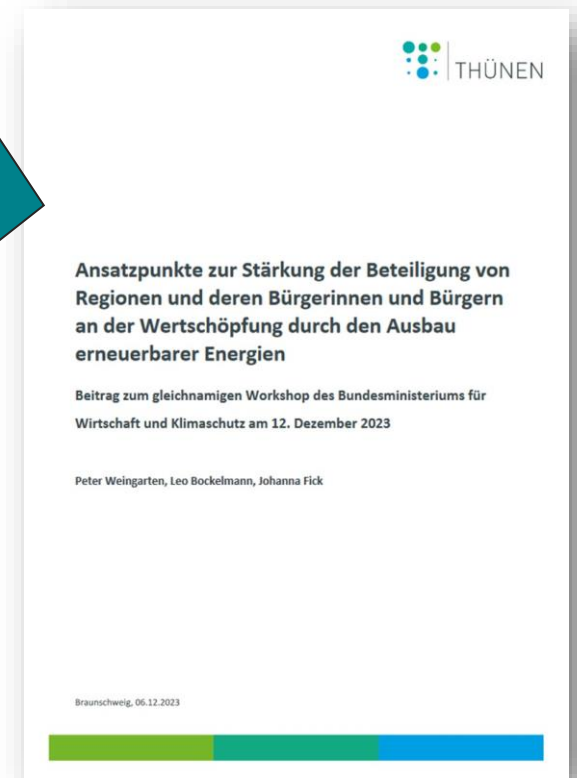


■ rural areas ■ not rural areas

Open-field photovoltaics  
(August 2023)



**„79 % (wind energy onshore) and 68 % (open-field photovoltaics) of the installed net rated power in Germany are found in rural areas categorized as *less favourable in terms of the socio-economic situation*“**



# Approaches for strengthening the participation of regions and their citizens

*"A **major challenge** for the expansion of renewable energies is the necessary **local acceptance**. This is influenced in particular by the **participation in decision-making** and **financial participation** of the affected municipalities and residents."*

"Models in which co-determination rights exist should be emphasized - **including cooperative forms of organization** in which co-determination **rights are independent of the level of financial participation.**"

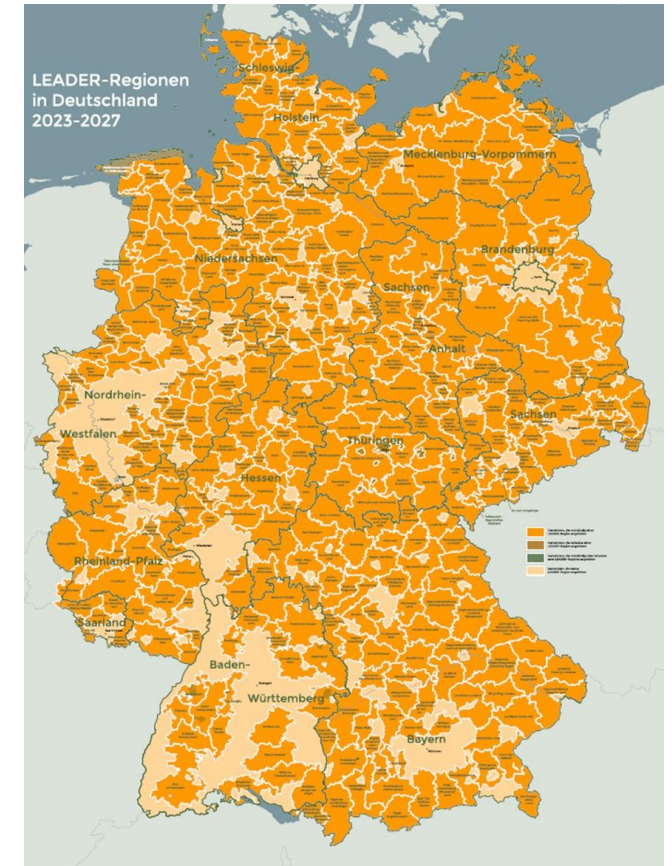


➔ **How can LEADER facilitate rural energy communities?**

# Advantages of LEADER to support rural energy communities

## LEADER...

- ...is **well established** in rural areas
  - 2023 – 2027: 372 LEADER regions in Germany
- ...pursues a participatory **bottom-up** approach
  - **multi-actor participation**
  - **inter-municipal strategies**
  - **regionally adapted solutions**
  - regional **economic value creation**
- ...comes with an **own budget und management** to support local initiatives



Quelle: eigene Darstellung

# Challenges

## LEADER...

- ...has **limited resources**
  - RMs cover a broad range of topics – energy transition is just one
    - Success often depends on having RM with RE-background
  - Funding
- ...works **bottom-up** to **address regional needs (not to push one single topic)**
  - **Strong support within the LAG** for a citizen-led energy transition is **needed**
  - however: **renewables** might sometimes be seen as a **risk rather than an opportunity**

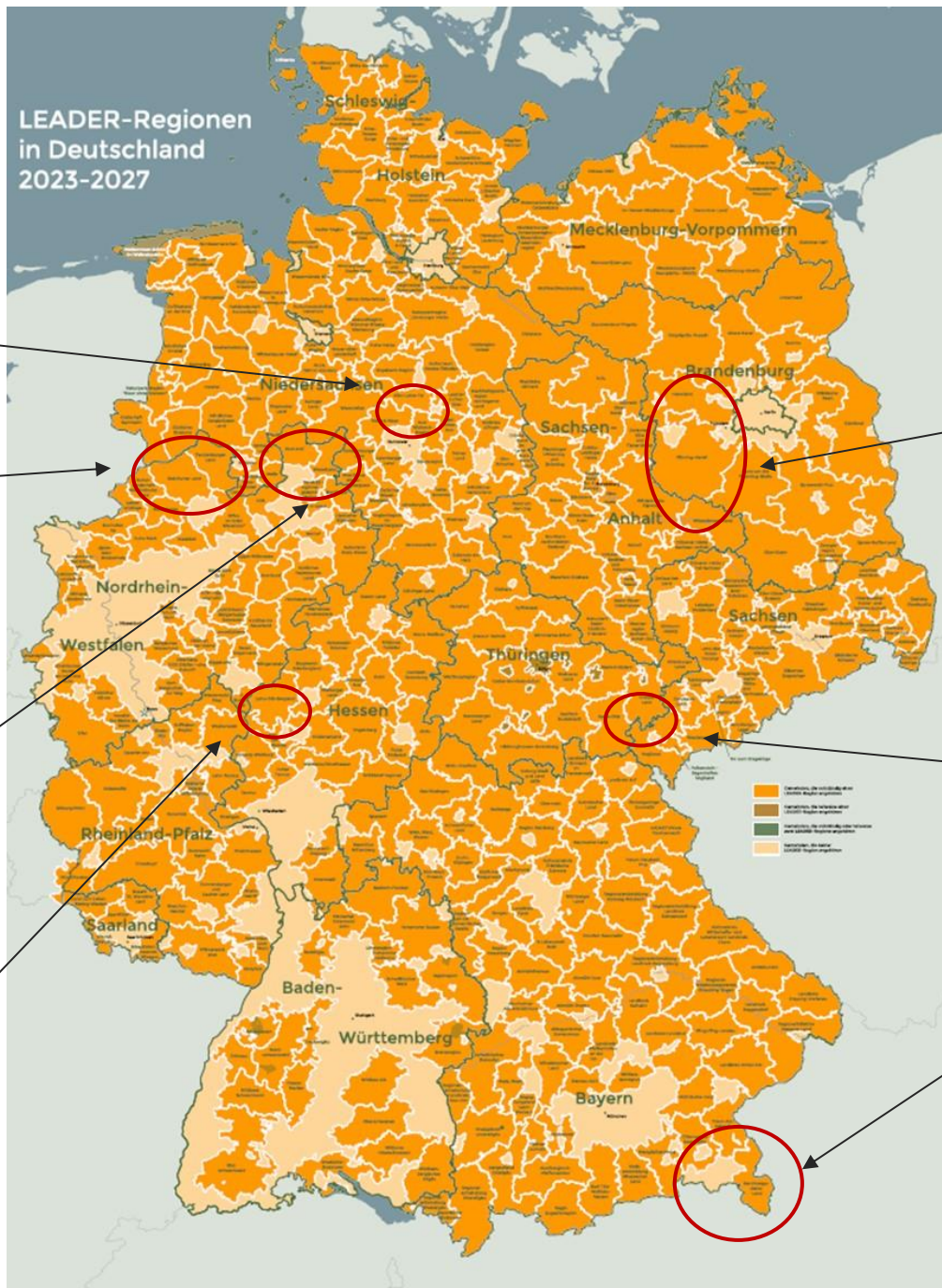
**Speeding up the energy transition** at EU and national level potentially **limits the room for locally-driven participation** processes.



# Specific contributions by LEADER

- **Agenda setting** & awareness raising
- **Communicate good practices**
- **Create a vision**
- **Initiate cross-actor networks** focussing on renewables
- Develop and implement a **long-term strategy**
- **Develop ideas and test their feasibility** (concepts & feasibility studies)
- Build up or strengthen permanent **supporting structures**

# Overview: examples



LEADER region Aller  
Leine Tal

LEADER regions  
Tecklenburger Land  
and Steinfurter Land

LEADER regions Havel  
and Fläming Havel

LEADER regions  
AueLand and  
WeserLand

LEADER region  
Holzland Saale

LEADER region Lahn  
Dill Bergland

LEADER regions  
Chiemgauer-Seenplatte,  
Chiemgauer Alpen,  
Berchtesgadener Land,  
Traun-Alz-Salzach (BY)

# LEADER regions AueLand & WeserLand (NW)



**Energie von hier**  
Chancen der (interkommunalen) Kooperation  
für regionseigene erneuerbare Energien

17. September 2024, 16.00 – 20.00 Uhr  
Rahden, Aula des Gymnasiums



**ASG** Agrarsoziale Gesellschaft e.V.  
aktiv für id ländliche Räume

Getragen durch:  
Bundesministerium für Ernährung und Landwirtschaft  
rentenbank  
Ministerien für Landwirtschaft und Verbraucherschutz des Landes Nordrhein-Westfalen  
Kofinanziert von der Europäischen Union



**ASG** Agrarsoziale Gesellschaft e.V.  
Aktiv für den ländlichen Raum  
www.asg-goe.de



Wie kann LEADER unterstützen?

LEADER kann vernetzt denken und Strukturen unterstützen

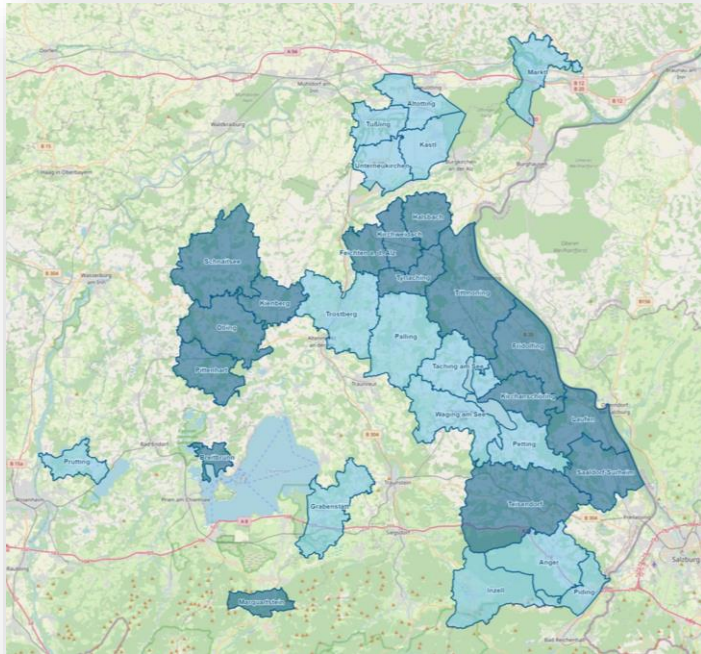
- Sichtbar machen, was es bereits gibt und was möglich ist im ländlichen Raum
- Lokale Initiativen und Akteure vernetzen
- Ggf. Kooperationsprojekte anstoßen: gemeinschaftliche Energienutzung (z.B. Wärmenetze)
- Wissensweitergabe

Source: DVS



- Agenda setting
- Communicate good practices
- Initiate cross actor networks

# LEADER regions Chiemgauer-Seenplatte, Chiemgauer Alpen, Berchtesgadener Land, Traun-Alz-Salzach (BY)



Source: <https://r-cr.de/startseite.html>

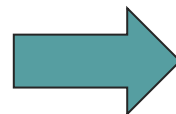
## Feasibility study: "Regionalwerk"

- Executing organization: Municip. Kirchanschöring
- Implementation period: 2018 – 2019

### Idea:

- \* enable local authorities and citizens to play a more active role in energy transition
- \* bundling and coordinating regional energy expertise
- \* establishing regional economic cycles and value chains alongside with existing and new energy initiatives

Develop ideas  
and test  
feasibility



**the „regionalwerk“ has been founded in 2020: 31 municipalities and towns in four districts are shareholders.**

# LEADER regions Steinfurter Land and Tecklenburger Land (NW)



## Guidelines of citizen energy

Source: energieland2050 e. V.

## Project: Servicepoint Wind 2.0 | Kreis Steinfurt

- Executing organisation: **Energieland2050 e. V.**
- Implementation period: **2023-2024**

### Idea:

- \* Advice and information center for wind energy in the Steinfurt district: central point of contact for citizens, municipalities, wind farm operators and regional project developers
- \* Accompanies the process of wind energy expansion at all levels and anchors the aspect of citizen energy
- \* Conflict support

Supporting structures

Independent advisory

# LEADER regions Havelland and Fläming-Havel (BB)



Source: DVS

## Project: Municipal photovoltaic potential for the expansion of citizen energy

- **Implementation period: to be defined**

### Idea:

- \* Strategic consulting to promote a citizen-led energy transition in the participating LEADER regions
- \* analysis of municipal potential
- \* Implementation of a service center for advising municipalities and citizen-led initiatives ("energy communities")

Supporting structures

Independent advisory

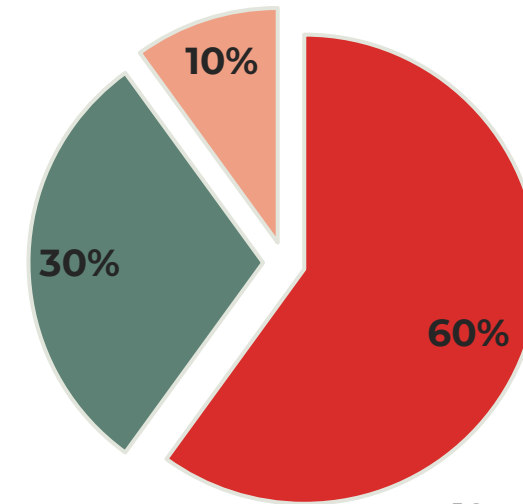
# LEADER region Lahn-Dill-Bergland (HE)

## Project: Foundation of the Lahn-Dill-Bergland Energie GmbH (2014) and the Lahn-Dill-Bergland Energie Cooperative (2016)

### Idea:

- \* **inter-municipal shaping** of the energy transition
- \* **cooperative spatial planning** to reduce visual and other burdens in the region
- \* **Economic participation** of the population

Shareholders of the GmbH



- 12 municipalities & mun. companies
- Three local business partners
- Energy Cooperative

Create a vision

Initiate Cross-Actor networks

Supporting structures

- Each project is an independent limited company
- It is at least 50% and up to 100% owned by the holding GmbH

# LEADER region Aller-Leine-Tal (NI)



## Milestones:

- \* **LEADER Project group as a catalyst** for various energy projects in the region (e. g. wind mill in citizens hands)
- Project group transformed into the EwALT network in 2016, by involving 150 stakeholders
- \* **Vision & Study: 100% energy region**
- \* Foundation of the **REALweg energy cooperative**
- \* Combination of **renewable energy expansion and tourism**

Create a  
vision

Initiate Cross-  
Actor  
networks

Develop and  
implement  
strategy



# LEADER region Saale-Holzland (TH)



## Milestones:

- \* Successful application for nationwide model project “Bioenergy regions” (2008) → funding until 2015
- \* Foundation of BürgerEnergie Saale-Holzland eG (2013)
- \* LEADER project “energy team” →
  - **1,5 staff positions** for advice & support for stakeholders in the whole region (including more than 90 municipalities!), education, public relations work
  - Initiation of a **climate protection concept for the district** (2015)

Create a vision

develop ideas and test feasibility

Initiate cross-actor networks

Develop and implement strategy

Source: <https://rag-sh.de/projekte/energieteam>

# What makes LEADER regions successful in supporting citizen led energy transition? Some Observations

- RMs skills and passion for renewables
- Strong support within LAG to focus on the topic
- Identification and mobilisation of relevant stakeholders to build a network
- Successful application for additional funding
- supportive „ecosystem“ for citizen led energy transition
- Close ties with strategic partners

# DVS offers

- Conferences, workshops and excursions (online & on site)
- Information sharing (our media)
- Direct exchange with LEADER-regions
- Dialog and exchange with strategic partners



 **BBEn**  
Bündnis Bürgerenergie e.V.

 **dvs\***  
Deutsche Vernetzungsstelle  
Ländliche Räume  
für die Gemeinsame Agrarpolitik der EU

Erste Schritte zum  
Bürgerenergieprojekt

September und November 2024 sowie Januar 2025

Dreiteilige Online-Workshop-Reihe

**Sonne, Wind & Co gemeinsam nutzen!**

**Chancen der Energiewende für das Land**

Tagung mit Exkursionen im Hunsrück



© fochnerMEDIA

**25.-26. September 2023**

**Hunsrückhalle**  
Schulstr. 16  
55469 Simmern (Hunsrück)



# Thank you for your attention!

## Kontakt

Deutsche Vernetzungsstelle Ländliche Räume –  
für die Gemeinsame Agrarpolitik der EU  
Deichmanns Aue 29  
53179 Bonn

Contact  
:Marie Halbach  
marie.halbach@ble.de  
www.ble.de  
Tel. +49 228 6845-2614



Finanziert von der  
Europäischen Union



Bundesministerium  
für Ernährung  
und Landwirtschaft



Bundesanstalt für  
Landwirtschaft und Ernährung

